



Commercial Credit Group, Inc (Mark Wenzel)
525 N Tryon Street, Charlotte, NC 28202 USA
(704) 414-2456

VIN: 1FUJGLD52FLGM9065

2015 FREIGHTLINER CASCADIA 125

SPECIFICATIONS	
MILEAGE	566,683 / 165,908 (ECM)
ENGINE HOURS	20,290
ENGINE	DETROIT DD15 14.8L 455 HP
ENG BRAKE	YES
ENG SERIAL	472906S0284200
FUEL / TANKS	DIESEL - 2 ALUM 200 GAL TOTAL
EXHAUST	SINGLE
TRANSMISSION	EATON-FULLER FRM 15210B 10 SPD MANUAL
DRIVE OPTS	POWER STEERING, CRUISE
REAR END	MERITOR 2.47
AXLE TYPE	TANDEM - F 12,000 LB / R 40,000 LB
GVWR	52,000
FRAME	STEEL
SUSPENSION	AIR RIDE
WHEELBASE	215"
TIRE SIZE	295/75R22.5
WHEELS	F ALUMINUM / R ALUMINUM
WHEEL 5TH	AIR SLIDE
AIR COND	YES, OPERATIONAL
SLEEPER	72"
DUAL BUNK	YES
INTERIOR COLOR	GREY
RADIO	AM/FM, OPERATIONAL
MIRRORS	DUAL POWER
HIGH BACK SEATS	DUAL
PASSENGER SEAT	AIR RIDE
EXTERIOR COLOR	RED
BUMPER	PLASTIC
EXTERIOR OPTS	HEATED MIRRORS, FULL FAIRINGS
COLLISION AVOIDANCE?	YES



BRAKES	
LEFT FRONT	RIGHT FRONT
22	22
LEFT REAR 1	RIGHT REAR 1
23	21
LEFT REAR 2	RIGHT REAR 2
23	21

TIRES & WHEELS			
LEFT FRONT		RIGHT FRONT	
13 / 32 FALKEN ALUMINUM		15 / 32 YOKOHAMA ALUMINUM	
LEFT OUTER 1	LEFT INNER 1	RIGHT INNER 1	RIGHT OUTER 1
15 / 32 - ALUMINUM	15 / 32 - STEEL	16 / 32 - STEEL	18 / 32 - ALUMINUM
LEFT OUTER 2	LEFT INNER 2	RIGHT INNER 2	RIGHT OUTER 2
15 / 32 - ALUMINUM	16 / 32 - STEEL	13 / 32 - STEEL	15 / 32 - ALUMINUM
FRONT TIRES: 295/75R22.5		REAR TIRES: 295/75R22.5	

ADDITIONAL TIRE DETAIL
REAR TIRES ARE FORTUNE BRAND.

GENERAL OBSERVATIONS

OIL MILKY?	NO	LIGHTS WORK?	YES - ALL
OIL LEAKS?	SEE NOTES	WIPERS WORK?	YES
WIPER LEAKS?	NO	SAFETY WORKS?	YES - ALL

WATER LEAKS?	NO	GAUGES WORK?	YES - ALL
OIL IN COOLANT?	NO	AIR HORN WORKS?	YES
CLUTCH PLAY?	OK	CITY HORN WORKS?	YES
STARTS?	YES		
DRIVES	YES	DIESEL PARTICULATE FILTER	PASS

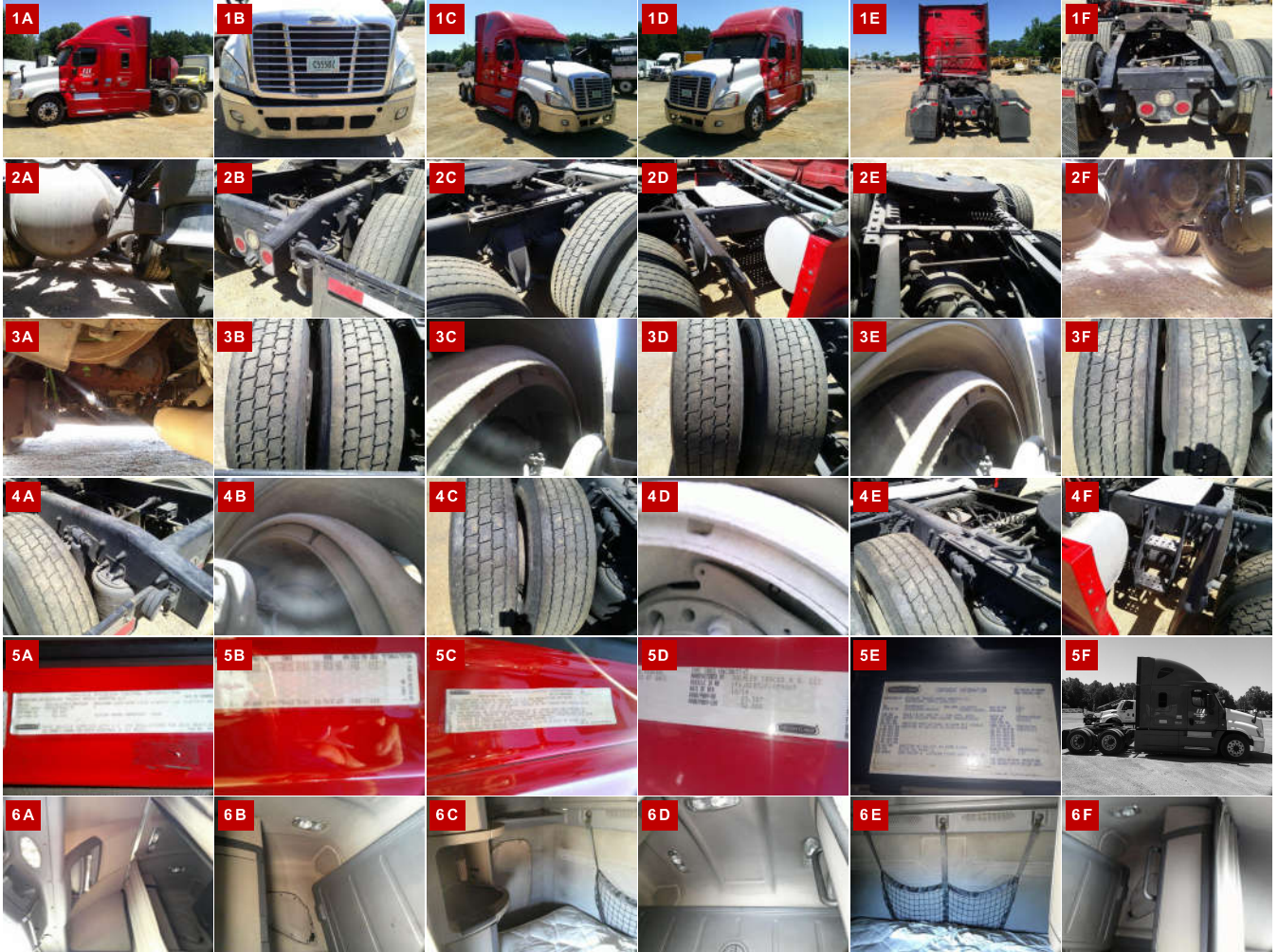
ADDITIONAL OBSERVATIONS

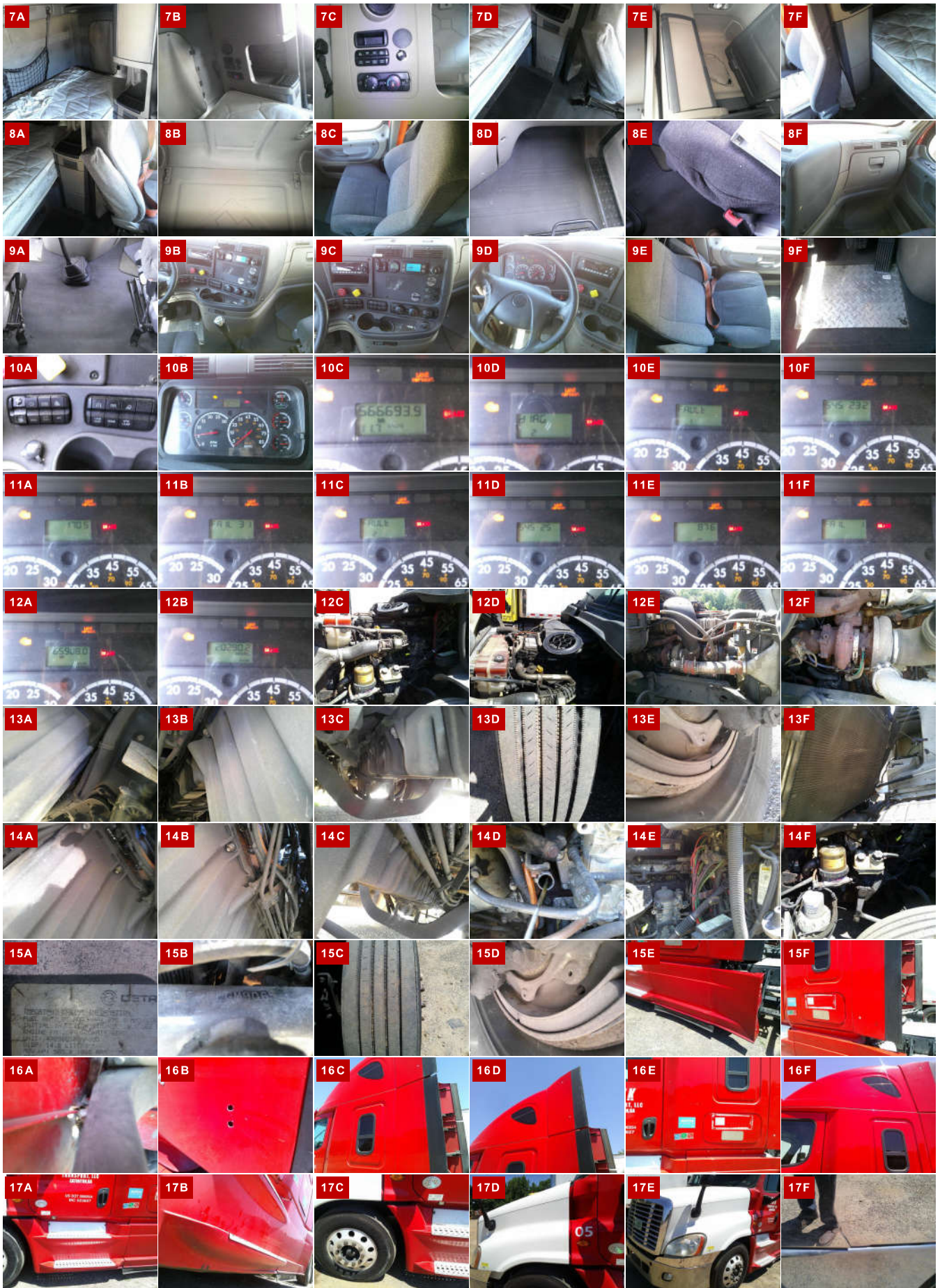
A/C NEEDS SERVICE. UNIT HAS TO BE JUMP STARTED. LOW VOLTAGE WARNING ALARM WAS ON DURING ENGINE OPERATION. LOW OIL. ENGINE OIL LEAK FROM ALONG THE OIL PAN GASKET. ENGINE OIL LEAK FROM ABOVE THE OIL PAN ON D/S FRONT CORNER. ECM MILEAGE DOES NOT MATCH DASH READOUT.

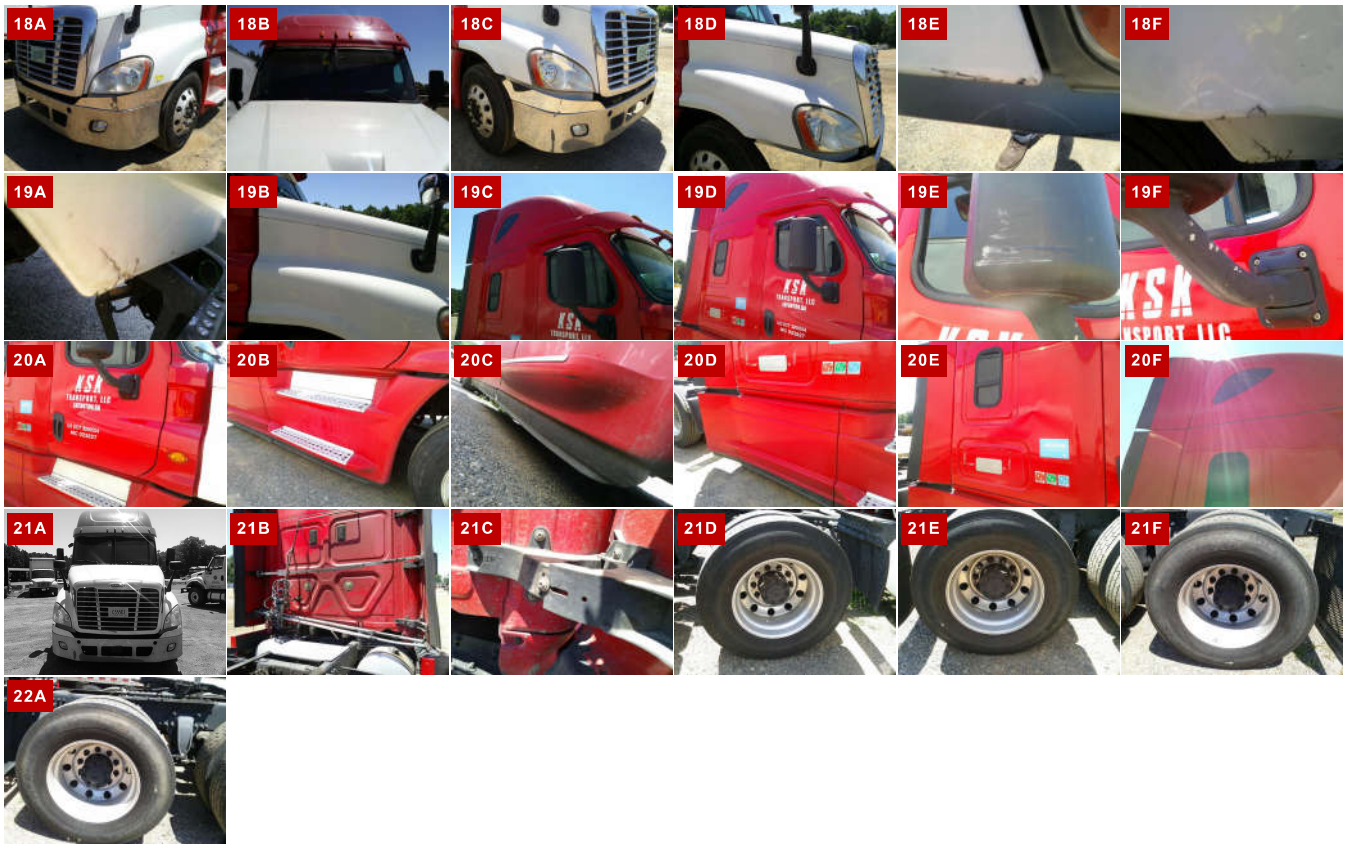
WEAR & TEAR DETAIL

DIAGNOSTIC	CHECK ENGINE LIGHT ILLUMINATED 4 ACTIVE / 26 INACTIVE FAULTS DETECTED - (SEE ECM REPORT)
DRIVER SIDE EXTERIOR	MISSING RUBBER EDGE FOR LH REAR FAIRING. RH STEP FAIRING SCRAPED ALONG THE BOTTOM.
BUMPER	CRACKED TRIM FOR LH SIDE BUMPER.
PASSENGER SIDE FENDER	CRACKED/DAMAGED EDGE FOR FRONT RH FENDER BELOW HEADLIGHT.
CAB EXTENSION	LOOSE FASTENER FOR BOTTOM BRACKET RH SIDE CAB EXTENDER. DAMAGED FASTENER CONNECTION AT BOTTOM OF LH CAB EXTENDER.
INTERIOR CAB	DAMAGE TO SIDE OF PASSENGER SEAT CUSHION.
HOOD	PAINT DOES NOT MATCH THE VEHICLE. MULTIPLE CRACKS ALONG THE FRONT
MIRRORS	LH SIDE POWER MIRROR DID NOT RESPOND TO SWITCH.
SEATS	BOTH ARE SHOWING WEAR
STEERING WHEEL	SURFACES HAVE WEAR
DASH	ADHESIVE RESIDUE IN THE CENTER OF THE DASH
CAB	SCRAPES ALONG THE LH TOP

REPORT PHOTOS







REPORT DOCUMENTS

Condition report only. National Inspection Services does not guarantee mechanical reliability.

© National Inspection Services
101 W. Shrader St. Liberty, MO 64068
www.nationalinspect.com